

FREQUENTLY ASKED QUESTIONS

THE
POSSIBILITIES
ARE ENDLESS

WITH THE
BUCKS COLLEGE FACTOR



**Buckinghamshire
College Group**

YOUR FUTURE STARTS HERE.

Let's get down to business.

It's completely normal to feel a bit nervous in the run-up to your first day. It's a big step to take, but just remember that everyone else is in exactly the same boat as you. Whether you already know people coming to college or you're riding solo, be assured that you are going to meet a whole load of new people on your course who have the same interests as you, which is pretty exciting.

INDUCTION

Here at Bucks College Group your induction is for 6 weeks, these are just some of the things you will learn and take part in:

- Fresher Fair
- Choosing a club
- How to get involved in the Student Engagement Team (SET)
- Expectation of Attendance and Punctuality
- Ready Respectful Safe, the Bucks College Group approach to behaviour
- 'Meet the Team' videos

HOW DO I GET TO THE COLLEGE?

You could travel by public transport, arrive by bike, or come by car where each campus has secure bike racks and car parks.

If you drive, depending on your campus, you may need to buy a parking permit.

All this information can be found via our website:

<https://www.buckscollegigroup.ac.uk/college-life/student-services/college-transport>



WHERE DO I GO ON MY FIRST DAY?

When you enrol you will be given your ID badge and details of your start date and time. Your timetable is available via your Student Portal 24 hours after enrolment.

HOW DO I ACCESS MY STUDENT PORTAL TO VIEW MY TIMETABLE AND INDUCTION INFORMATION?

You will be able to access your portal 24 hours after you enrol and receive your ID card. At this point, go to <https://www.buckscollegigroup.ac.uk/portal> in your web browser.



Select "E-ILP" to access your lesson timetable. Select "Cloud VLE" to view our digital Induction area which contains everything you need to know about College life.

Login to these systems with your student ID number which is printed on your ID card (i.e. 24009831) as your username and your password which is your date of birth in the format of DDMMYY (i.e. if you were born on 14th October 2008, it's 141008).

On your first day, please arrive 15 minutes early, when you enter the Campus, you will be greeted by our friendly staff who will direct you to where you need to go.

WHAT CAN I WEAR TO COLLEGE?

Clothes should be of a professional nature and suitable for the work environment. Some courses may require a uniform; your Tutor will confirm this with you at enrolment or on your first day.

WHAT DO I NEED TO BRING ON MY FIRST DAY?

This depends on what course you're doing and if you've been instructed to bring in anything specific by your tutor. Make sure you double check your Student Portal to ensure you know your timetable but be sure to bring in the usual items like a notepad, some stationery, and a water bottle.

You should also make sure that you have some lunch or some money to buy some. We have places on-site where you can purchase food such as the Refectory, or vending machines.

Check out our Student Services page to see if you are entitled to free meals.

<https://www.buckscollegigroup.ac.uk/college-life/student-services>



CAN I GET FINANCIAL HELP FOR COLLEGE?

Information can be found out via our website:

<https://www.buckscollegelife.ac.uk/college-life/student-services>



WHAT IF THERE IS A PROBLEM?

If you have learning difficulties, disabilities, medical conditions, or specific needs related to literacy, numeracy, or language, you can access additional support.

We really hope you settle in straight away, but if you hit a few speed bumps, there will always be someone to talk to.

Whether you are just unsure if College is the right option for you, are having a problem with the work, or maybe even having problems at home, make a note of the contacts on the back cover and you will always have someone to turn to.

Here at Bucks College Group, we also work with lots of external agencies and always have Mental Health First Aid Champions and Safeguarding Officers on-site, so you can be assured of your safety whilst at College.

Our 'Swap Don't Drop' sessions which run daily between 4pm and 5pm (for the first 6 weeks) in the Atrium of every Campus, are here to support you if you have any concerns regarding the course you have enrolled to.

The best thing you can do on your first day of College is to be yourself. Ask questions, explore the Campus, and get comfortable. After all, you're going to be here for a good while!



24/25 COLLEGE CALENDAR

Thinking about when College might start or where to plan your holidays? Then take a look at our term dates for the forthcoming year ahead.

Start of Autumn Term (Full time Students)	Monday 9th September 2024
Start of Autumn Term (Part time Students)	From 9th September 2024 (dates vary)
Autumn Half Term	Monday 28th October – Tuesday 5th November 2024
End of Autumn Term	Thursday 19th December 2024
Winter Holiday Period	Friday 20th December 2024 – Monday 6th January 2025
Start of Spring Term	Monday 6th January 2025
Spring Half Term	Monday 17th – Friday 21st February 2025
End of Spring Term	Friday 4th April 2025
Spring Holiday Period	Monday 7th – Wednesday 23rd April 2025
Start of Summer Term	Wednesday 23rd April 2025
May Bank Holiday (College closed)	Monday 5th May 2025
Summer Half Term	Monday 26th – Friday 30th June 2025
End of Summer Term & Academic Year	Friday 4th July 2025
Summer Holiday Period	Starts Friday 4th July 2025
GCSE Results Day	Thursday 21st August 2025 (TBC)

WHO TO CONTACT

Have a question? Get in touch using the details below or if you are unsure who to talk to, simply find the orange question button on our website, pop your question in and we will do the rest.

Admissions (Advice, Applications, Interviews)

admissions@buckscollegelife.ac.uk | 01296 588 588

Welfare, Student Finances & Student Engagement Team

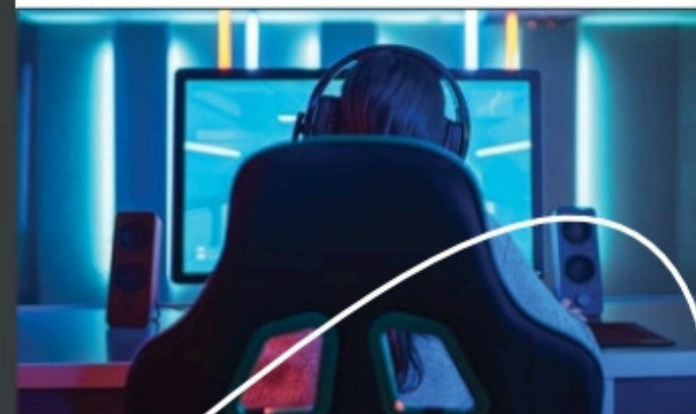
safeguarding@buckscollegelife.ac.uk
studentservices@buckscollegelife.ac.uk
Amersham: 01494 585 415
Aylesbury: 01296 588 592
Wycombe: 01494 585 387

Learning Support

learningsupport@buckscollegelife.ac.uk
Amersham: 01494 585 341
Aylesbury: 01296 588 540
Wycombe: 01494 585 341

Apprenticeships & Workforce Development

apprenticeships@buckscollegelife.ac.uk | 01296 588 560



Buckinghamshire
College Group

